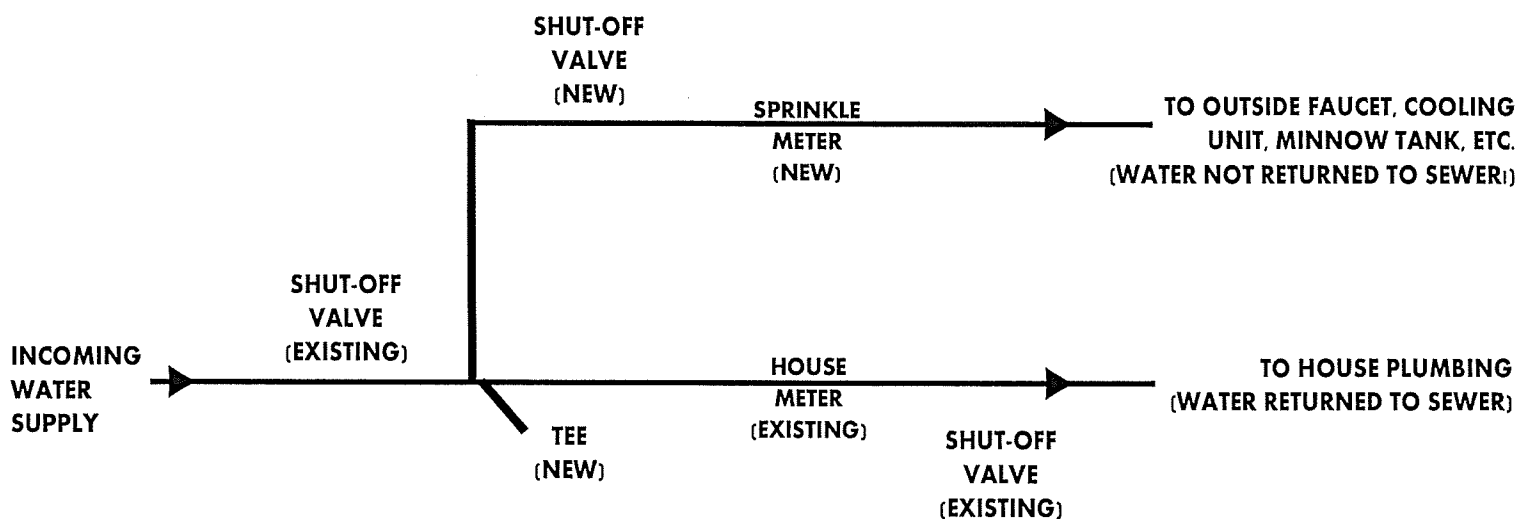


LAKELAND SANITARY

DISTRICT #1

minocqua woodruff arbor vitae

SPRINKLE METER INSTALLATION



THE ABOVE IS A TYPICAL SPRINKLE METER INSTALLATION, FAVORED BY LAKELAND SANITARY DISTRICT #1.

THE SANITARY DISTRICT WILL FURNISH THE METER UNIONS FOR INSTALLATIONS OF ALL METERS.

THE PRIMARY (MAIN) METER SHALL BE FURNISHED AND MAINTAINED BY THE DISTRICT AT NO COST TO THE CONSUMER.

ALL SPRINKLE METERS WILL BE FURNISHED AND MAINTAINED BY THE SANITARY DISTRICT FOR A NOMINAL FEE. PRESENT FEE IS \$35.00 WITH AN INDIVIDUAL \$5.00 PER QUARTER RENTAL FEE. THIS CHARGE IS SUBJECT TO CHANGE, PENDING RATE CHANGES BY THE WISCONSIN PUBLIC SERVICE COMMISSION OR CHANGES IN OPERATION COSTS.

ANY ALTERATIONS TO THE INTERIOR OR EXTERIOR PLUMBING TO ACCEPT ANY METER OR METER CHANGES SHALL BE DONE AT THE CONSUMERS EXPENSE.